

Alfa Laval MK15-BWFGR

Specifications

Marque	Alfa Laval
Type	MK15-BWFGR
Product type	PHE
Refrigerant / Medium	Freon/Glycol
Capacité kW	940,0
Size	1850x750x1520mm (LxWxH)
Layers / Cassettes	84
Volume	212,1 l
Remarks	Capacity based on glycol -2/-6°C, NH3 evaporation temperature of -10°C and a glycol flow of 230,1 m ³ /h
Remarks	76,8 m ² surface area; 106,7 l/105,4 l volume
Stock	1

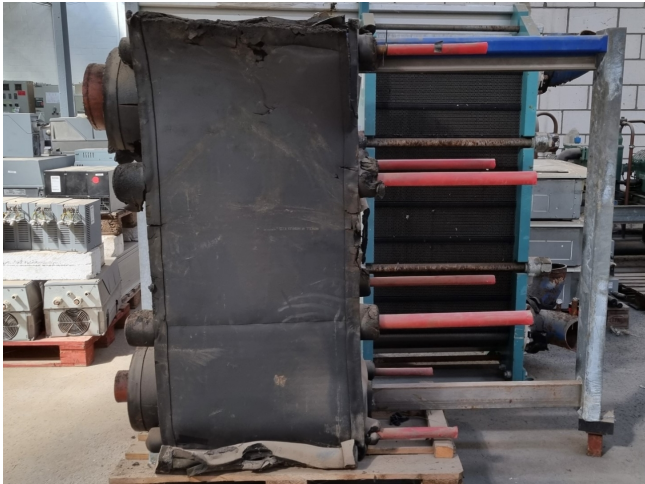


Description

Used Alfa Laval MK15-BWFGR

Used Alfa Laval MK15-BWFGR plate heat exchanger (evaporator).

Weight: 1874 kg



ALFA LAVAL			
TYPE		NOZZLE IDENTIFICATION	
MK15-BWFCR		S1-S1	S2-S1
MANUF.NO.		WORKING PRESSURE (GAUGE)	
30103-27731		15.0 bar	16.0 bar
YEAR	VOLUME	WORKING TEMPERATURE	
2001	212.4 l	-25/50 °C	-30/50 °C
TEST PRESSURE (GAUGE)		21.0 bar / 21.0 bar	